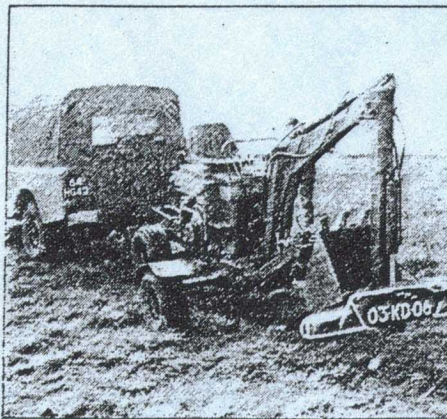


British Army selects Powerfab excavator

A NEW AND INNOVATIVE self-trailing excavator has been supplied to the British Army by the Powerfab company. Capable of working in terrain beyond the reach of other types of excavator, the Powerfab 125 WT is fitted with stabilisers which operate independently and permit the vehicle to cope with varying ground conditions.

Powered by a 10 hp air-cooled Honda petrol engine, the Powerfab 125 WT is capable of digging to a depth of 2.6 m and has a hydraulic power take-off facility. Normally fitted with a digging bucket, the Powerfab has a tearout force of 1.9 tons.

The company has supplied 90 125 WTs to the British Army and reports strong interest from other forces. The proven ability of the vehicle to work in water, dig ditches in difficult terrain and the fact that it can be operated by one man, are the features which



▲ One of a series of 90 Powerfab Micro Excavators supplied to the British Army, its ability to work in water, dig ditches in difficult terrain and be operated by one man, set it apart from conventional diggers.

set the Powerfab apart from conventional diggers.

Light enough to be towed by a Land Rover, the 125 WT can be easily manoeuvred by hand when removed from the vehicle, the trailer wheel being detachable to keep it free of mud when working. The digger can be operated in confined areas where tight access and low overhead clearances are necessary.

The main body of the vehicle measures 1.67 m in length and is 0.7 m wide: prepared for towing, the 125 WT is 3.66 m long and measures 2.10 m to the top of the stowed digging arm. When not required, the tow bar folds away so that it cannot interfere with digging operations.

BW
MANUFACTURER: Powerfab Sales and Spares Ltd, Fair View, Ashvale, Tredegar, Gwent NP2 3HA, UK.